

# Silhouette

by Deborah Edwards



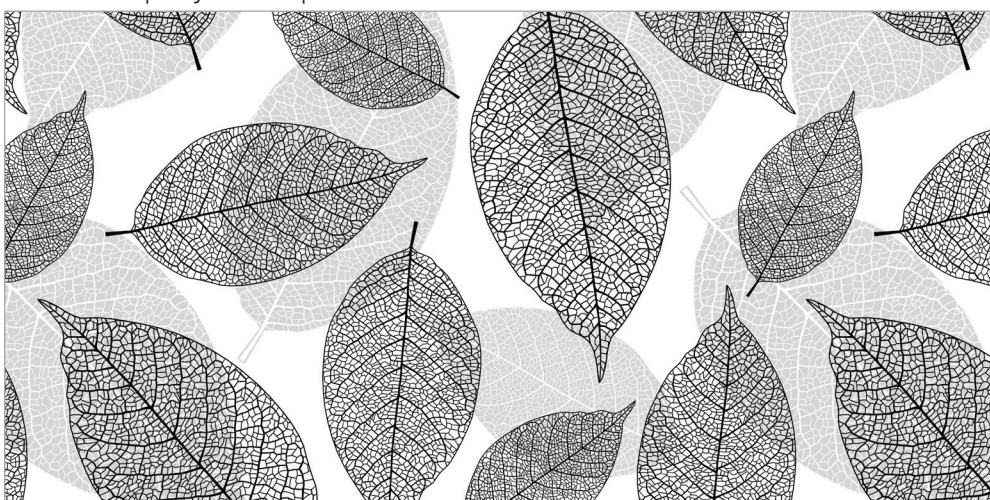
23985-92 | Full Width Border Trees | Gray White



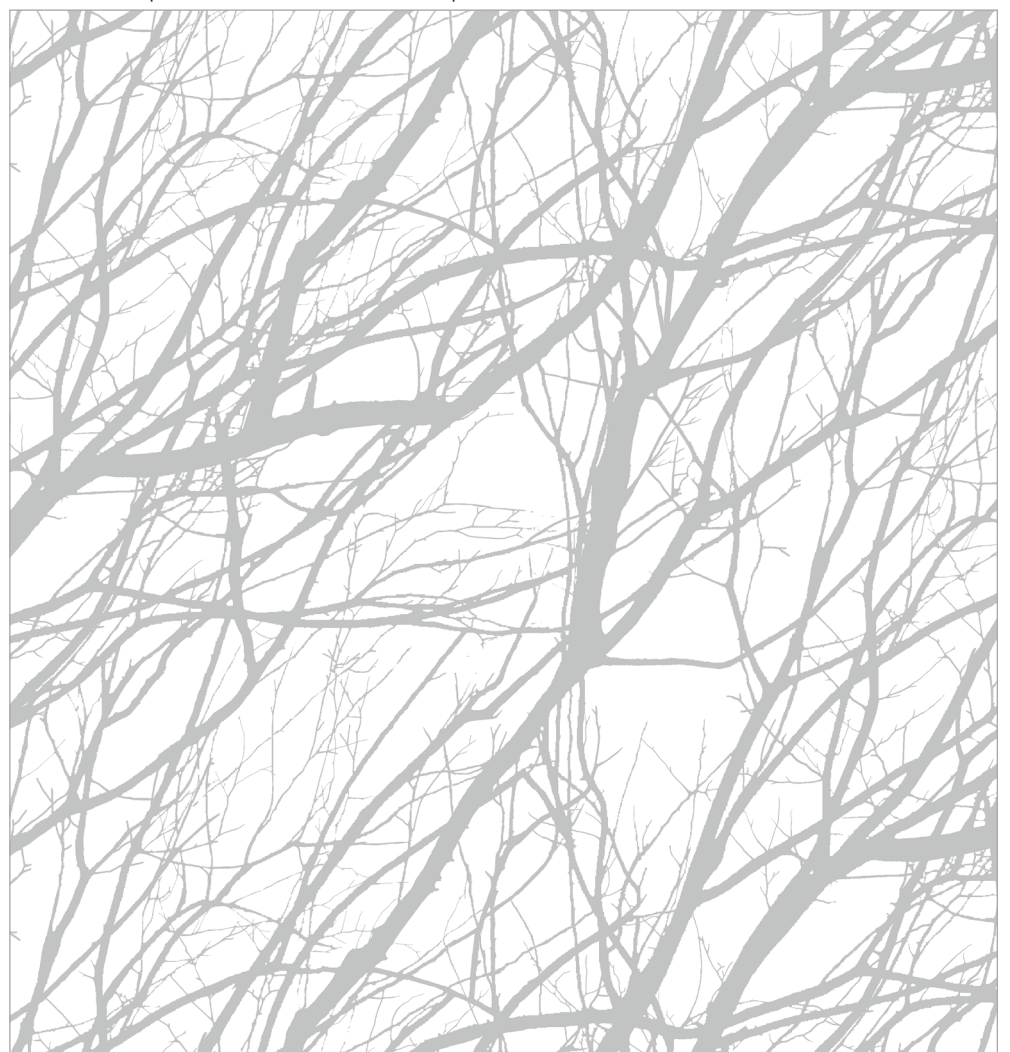
23985-99 | Full Width Border Trees | Black White



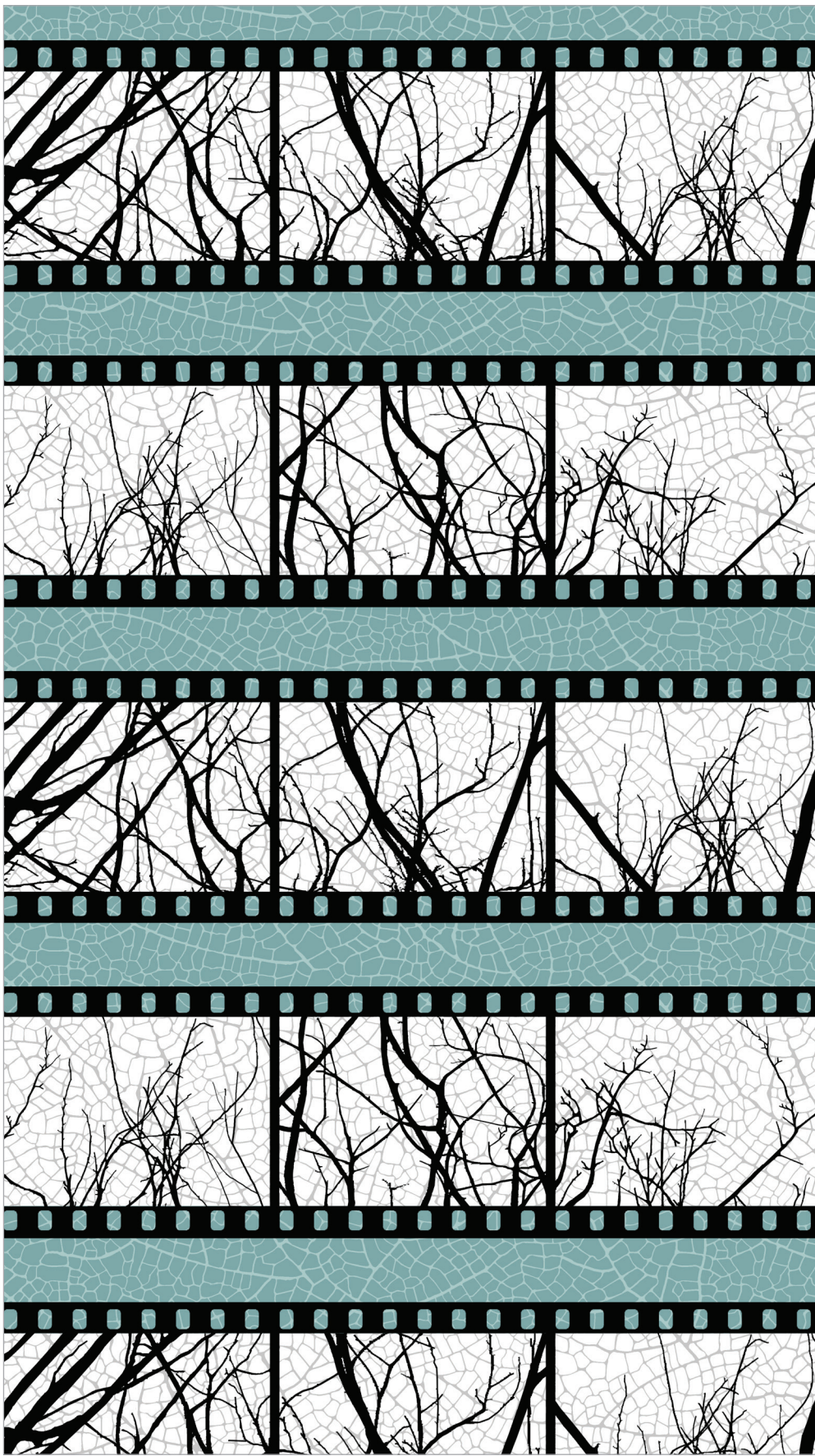
23990-99 | Tiny Leaves | Black Multi



23988-99 | Large Leaves | Black Gray



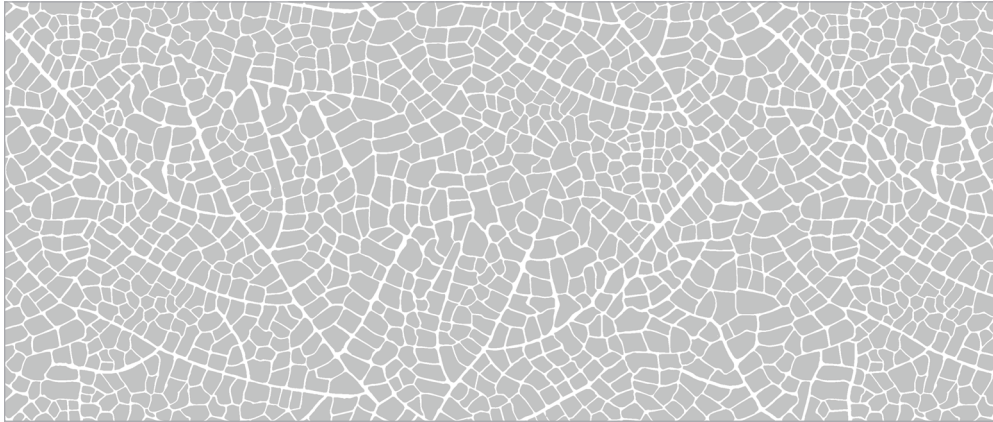
23986-92 | Branches | Gray White



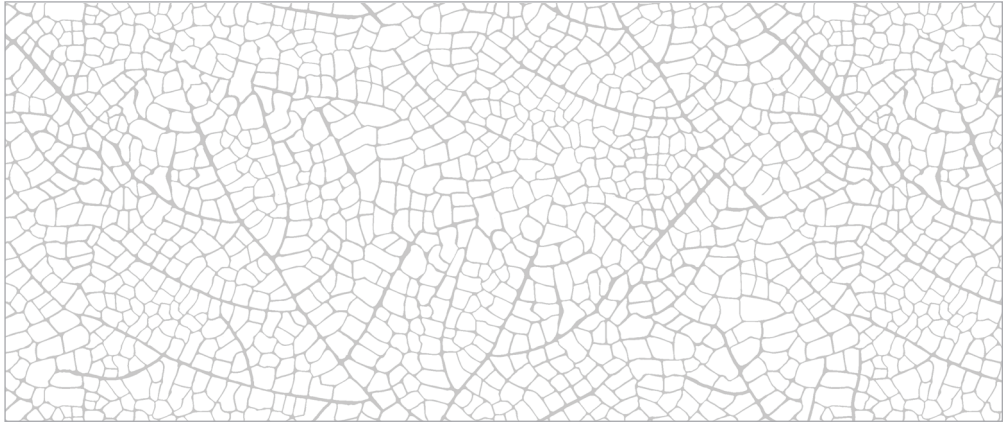
23987-99 | Film Strip Border | Black White



23986-99 | Branches | Black White



23991-92 | Leaf Texture | Gray



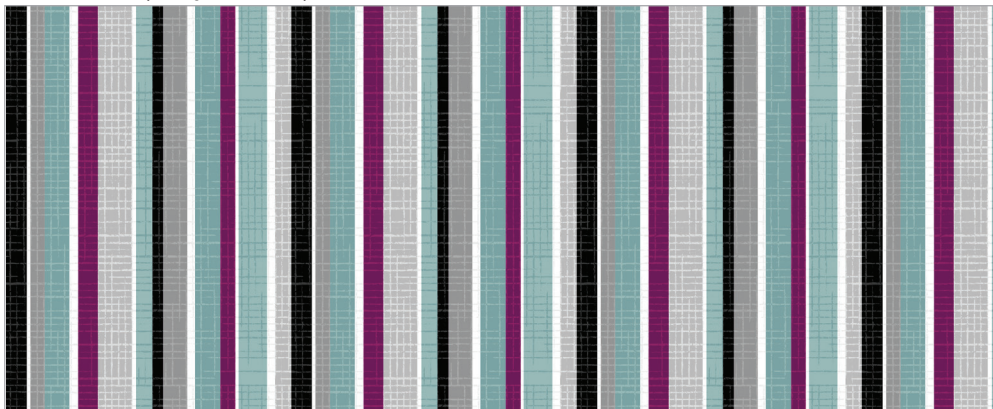
23991-10 | Leaf Texture | Whitewash



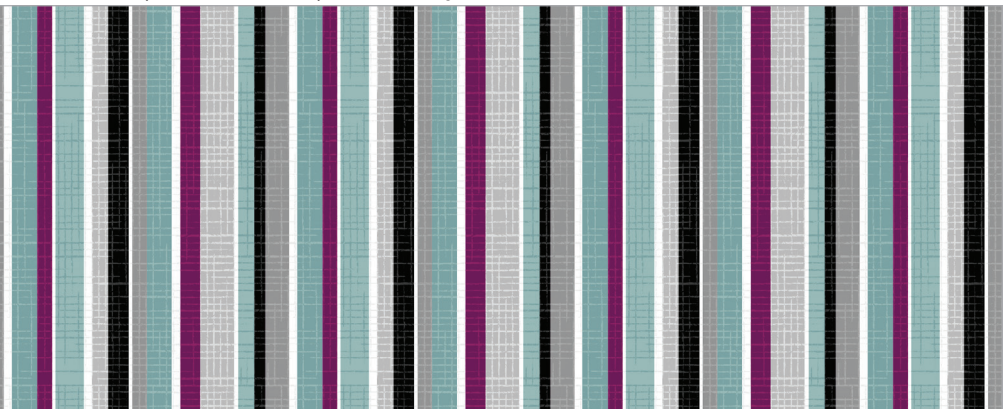
23990-86 | Tiny Leaves | Off Beat



23989-62 | Small Leaves | Nordic Sky



23992-99 | Barcode Stripe | Black Multi



# Windsong

by Northcott Studio

Florals, especially black and white are trending. Created by the Northcott Studio, Windsong features beautifully illustrated florals in a soft watercolor technique. The selection of multi-directional florals are offered in a wide variety of scales and values adding depth and dimension to your projects. The featured prints are complemented by charming coordinates and blenders. Though mostly black and white, with many shades of gray, a pop of yellow adds interest and appeal to the group. A variety Simply Neutral prints as well as Toscana blenders completes the coordination.